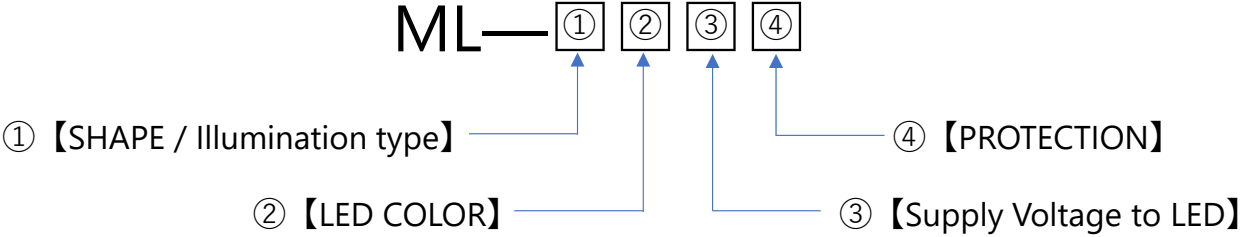
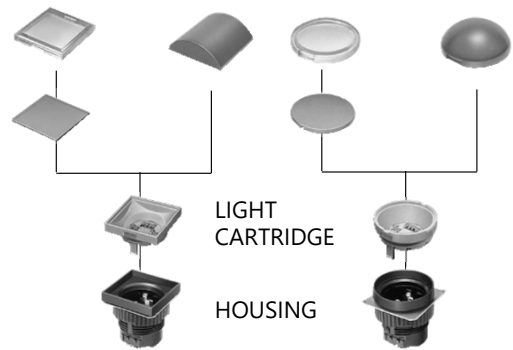


ML – Light Cartridge –



ML – Light Cartridge –

ML—①②③④

① 【SHAPE / Illumination type】 (Distinguished by Appearance and Marking)

Button shape	LED color marking	Product code
Square	Without marking	S0
Square	1 digit	S0
Square	2 digits	S3
Round	Without marking	R0
Round	1 digit	R0
Round	2 digits	R3

※ Ref. (A) ※ Ref. (B)

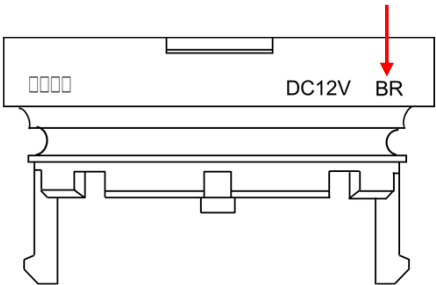
※ (A) : Button shape



② 【LED COLOR】 (Distinguished by Marking) ※ Ref. (B)

Marking	Product code	Marking	Product code
Without	X	BR	147
R	7	BG	148
G	8	BY	149
Y	9	WR	167
B	14	WG	168
W	16	WY	169
M	18	MR	187
RG	78	MG	188
GY	89	MY	189
YR	97		

※ (B) : “LED COLOR” Marking



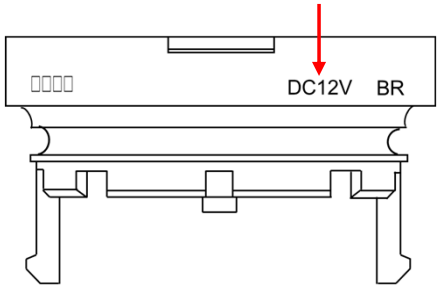
ML – Light Cartridge –

ML—①②③④

③ 【Supply Voltage to LED】 (Distinguished by Marking) ※ Ref. (C)

Marking	Product code
DC12V	2
DC24V	3
Without marking	X

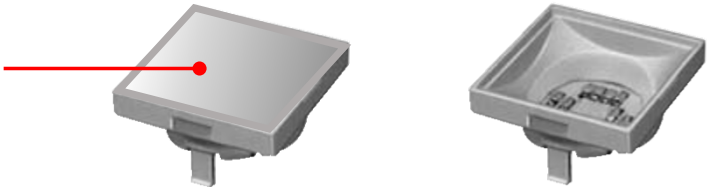
※ (C) : “Supply Voltage to LED” Marking



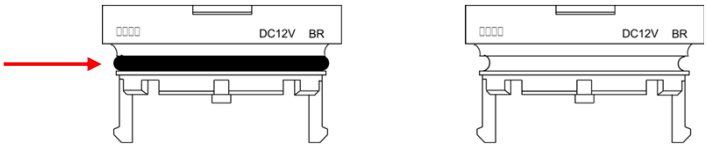
④ 【PROTECTION】 (Distinguished by Appearance)

Water proofing cover	Rubber packing	Product code
With cover	With rubber packing	B
Without cover	Without rubber packing	A

Water proofing cover



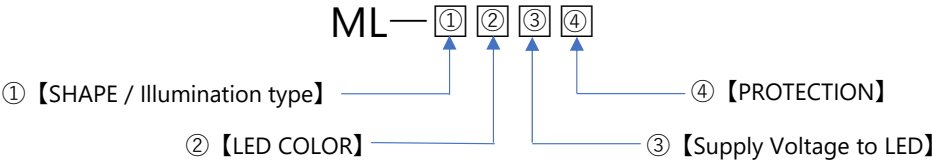
Rubber packing



With water proofing cover
& rubber packing

Without water proofing cover
& rubber packing

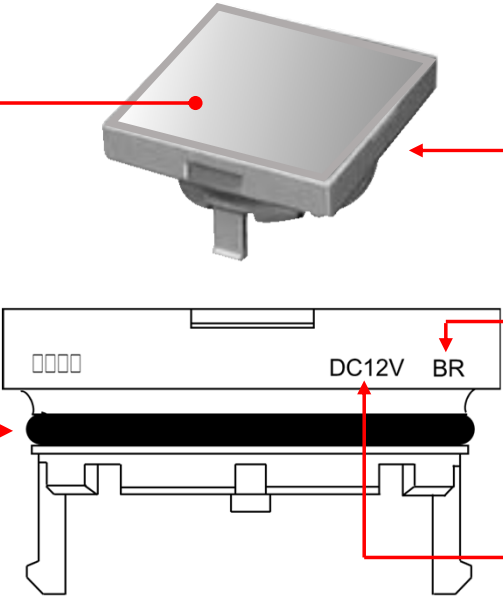
ML – Light Cartridge –



e.g.) ML—S31472B

① ② ③ ④

④ 【PROTECTION】
With water proofing cover
& rubber packing : B



① 【SHAPE / Illumination type】
Square / LED marking 2 digits : S3

② 【LED COLOR】 BR : 147

③ 【Supply Voltage to LED】
DC12V : 2