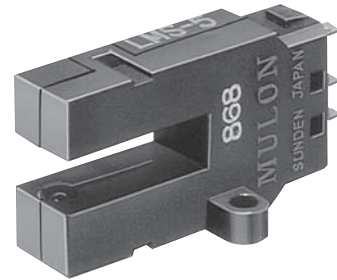


LMS-5

LMS-5 Light Sensor

Wide application range from Pulse circuit to Magnetic relay operation.

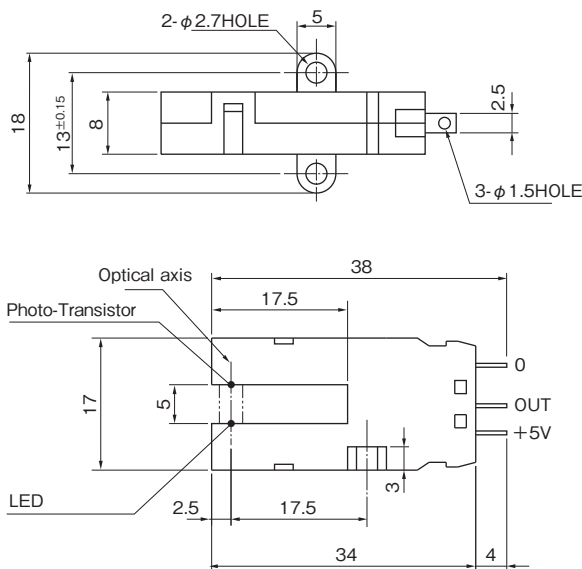
- Easy set of the position of approximation object for its having long slit of 17.5mm.
- High stability and long life for its using of infrared LED in light projecting set.
- Response speed is very fast for its using of Photo-transistor in light receiving set.
- Output current, maximum $I_c=80\text{mA}$, is very high and the magnetic relays can be operated directly, because the high amplifier is used in.



SPECIFICATION

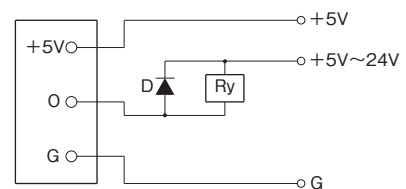
Supply Voltage	DC5V \pm 10%
Supply Current	30mA (at 5V)
Load Voltage	Max. 24V
Load Current	Max. 80mA
Output Style	Output is ON when shield the Light
Size of Light Shielding Object	Min. ϕ 2mm
Working Light	Infrared LED, direct current lighting
Ambient Temperature	-10~70°C
Ambient Humidity	Less than 80%RH (without waterdrops on Projecting/Receiving surface)

DIMENSION



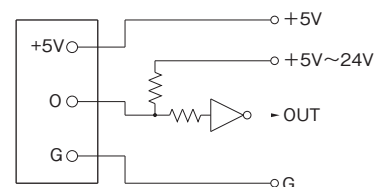
APPLICATION CIRCUIT

● Inductive Load Circuit



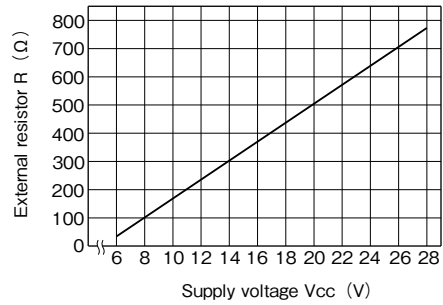
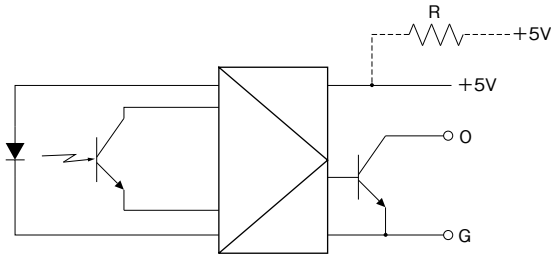
D : Protection Diode

● Non-inductive Load Circuit



Tolerance : $\pm 0.4\text{mm}$

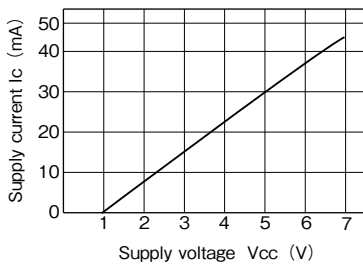
CIRCUIT DIAGRAM



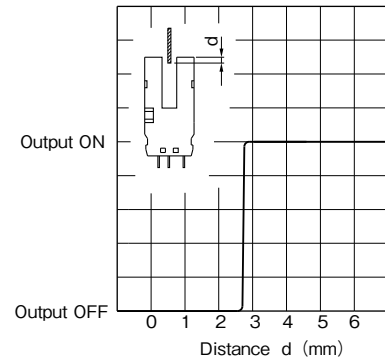
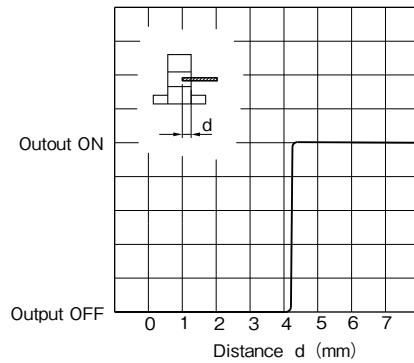
Note : In case of your use with supply voltage more than 5V,
Please connect external resistor R by the right chart.

CHARACTERISTICS CURVE (EXAMPLE)

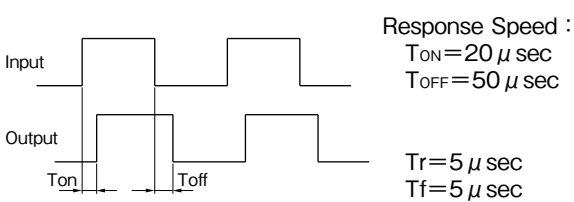
●Supply voltage—Supply current



●Detective Position



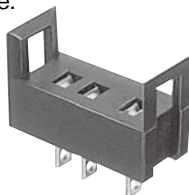
●Response



ACCESSORY

●Socket for LMS-5 : LMS-019

One touch mounting socket is available.



ORDERING CODE

LMS-5

Tolerance : $\pm 0.4 \text{ mm}$