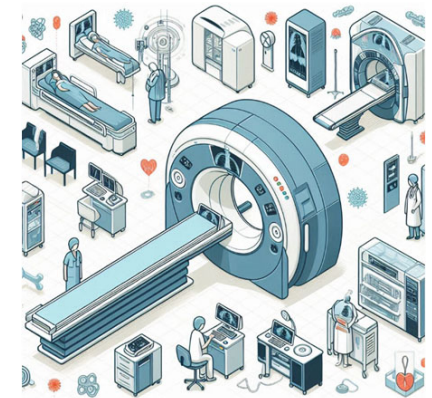
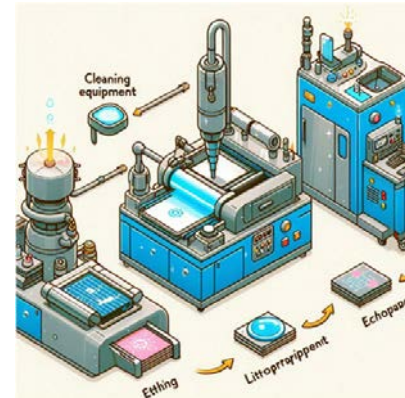


SOLUTIONS



Electric Power Industry



Illuminated Pushbutton Switches and Indicators, which are widely used in power installations, e.g. thermal, hydro and nuclear power plants, are important components to inform operators of the operational status of equipment and to assist in safe and efficient management.

Thermal power plants

In boiler and turbine control panels, they are used to indicate conditions such as temperature and pressure.

Hydroelectric power plants

In generator and gate opening and closing controls, they inform the operator of water level and flow conditions.

Nuclear power plants

In controlling nuclear reactions and monitoring cooling systems, they play an important role in indicating system status and safety warnings.

Our related products



For more details, click on the frame for each part.

Broadcasting Industry



Illuminated Pushbutton Switches and Indicators are widely used for operation panels and equipment control in broadcasting station.

The **no sound switch** is important to avoid unwanted noise during broadcasts, e.g. when reading news scripts. (Silent type : EH, KA, K2, K9 & KC)

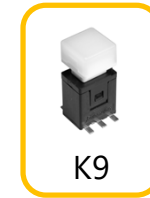
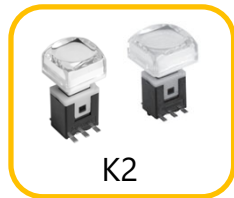
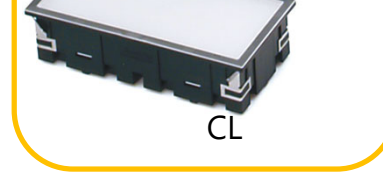
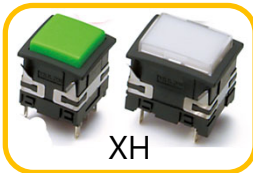
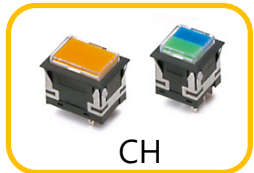
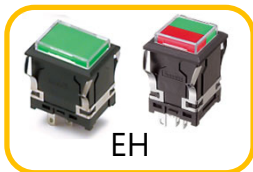
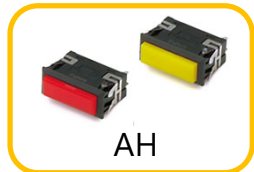
Indicators are widely used in broadcasting to indicate ON AIR and camera status. These indicators play an important role in clearly communicating the status of broadcasting, recording, etc. to all persons concerned inside and outside the studio.



Illuminated switches used in switcher boards are important components for switching video and audio in control rooms.



Our related products



For more details, click on the frame for each part.

Railway Industry



Illuminated Pushbutton Switches and indicators are essential for safety and efficient operational management in railway installations.

Station equipment, Platform doors, Station broadcasting equipment & operation panels

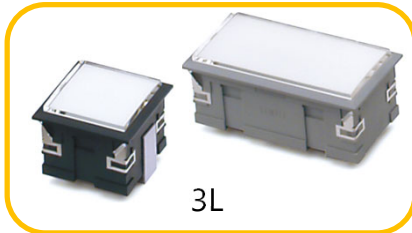
Illuminated switches are highly visible in dark areas and are used in a wide variety of applications.

Station platforms and in trains

Indicators are used to convey information visually.

For example, red vehicle lights to indicate the opening and closing of vehicle doors, and alarm lights to warn station offices and trains in case of an emergency.

Our related products



For more details, click on the frame for each part.

Semiconductor Industry

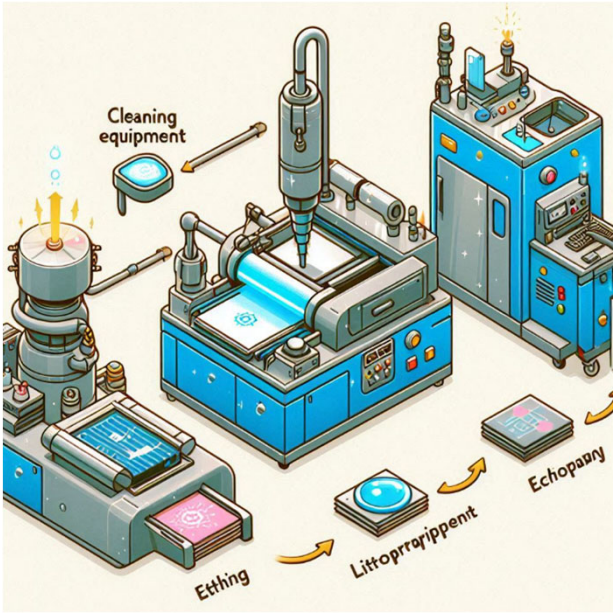
Illuminated Pushbutton Switches and Indicators in semiconductor manufacturing equipment enhance operational visibility, play an important role in supporting safe and efficient manufacturing processes.

For precise operation

In semiconductor manufacturing equipment, which is designed to prevent misoperation, illuminated switches with good visibility support more precise operation.

For safe equipment operation

Indicators are used to visually communicate machine operating status and abnormalities. Different colors provide different information, e.g. LED green to indicate operation, red to indicate an abnormality, etc.

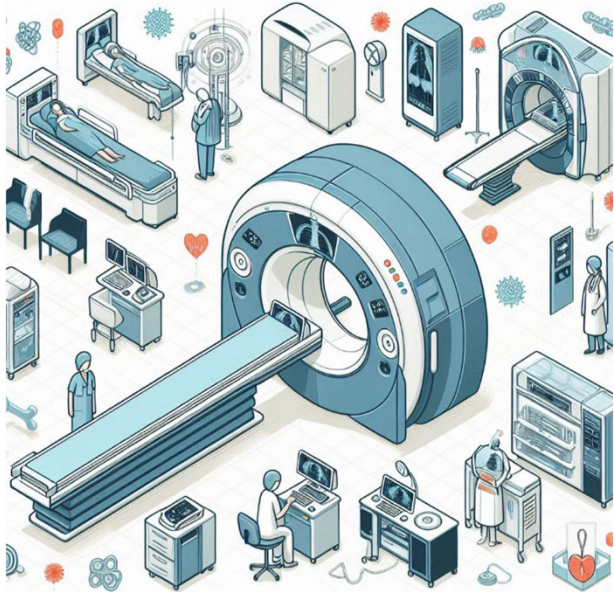


Our related products



For more details, click on the frame for each part.

Medical Industry



Illuminated Pushbutton Switches and Indicators are essential components to enhance operability and safety of medical equipment.

Computer Tomography (CT) & other testing equipment

Highly visible illuminated switches and indicators are crucial for accurately informing operators about the status of the equipment and the ongoing process. Information from them enables operators to assess the status of the equipment and take appropriate action if necessary.

Example of use of indicators in blood analyzers

The green indicator light illuminates during analysis of the blood sample and changes to blue when analysis is complete. The red indicator light may flash if an error occurs.

Adjustment of patient's bed

Illuminated switches are also used for fine adjustment of the position of the bed on which the patient lies.

Our related products



ML



3L



VL



CH



EHG



VH



XH



TA



LL

For more details, click on the frame for each part.